

Supporting Information

Prugnolle et al. 10.1073/pnas.0914440107

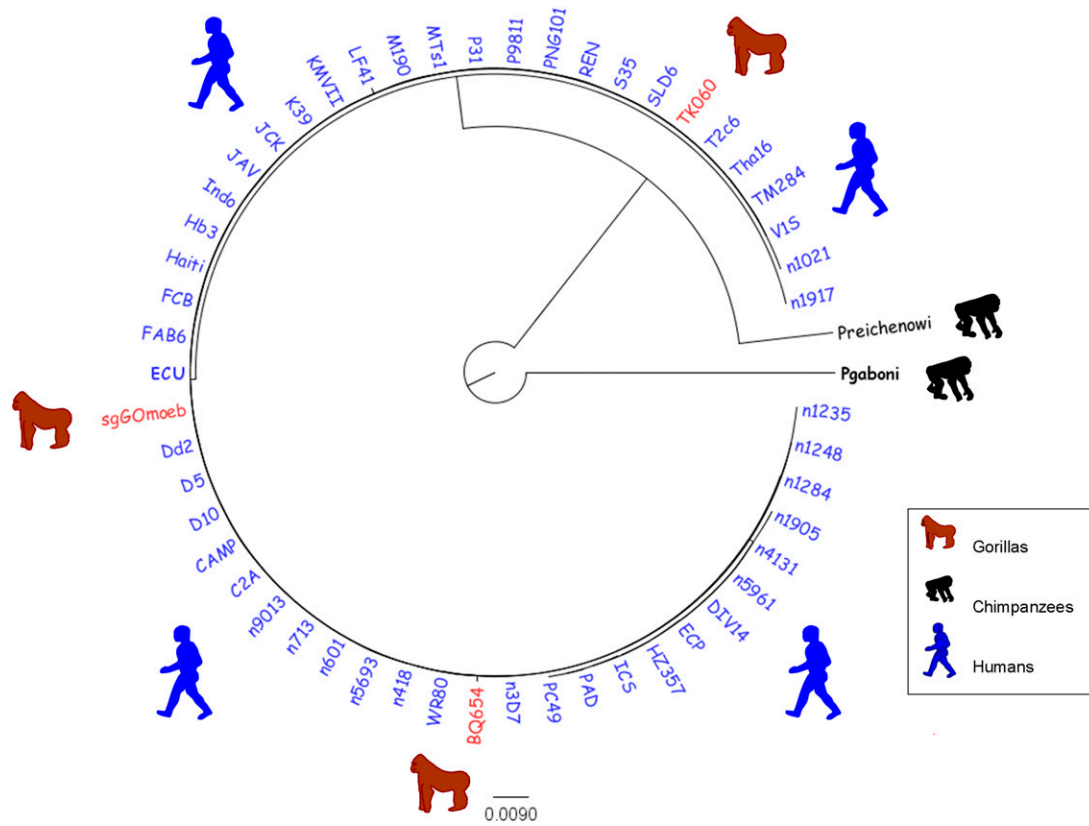


Fig. S1. Phylogenetic position of the *P. falciparum* Cyt *b* sequences obtained from primates (in red) within a panel of *P. falciparum* Cyt *b* sequences obtained from humans collected all over the world (in blue). The human sequences are from Joy et al. (1), chosen to represent the worldwide diversity. (Scale bar, 0.009 substitutions per site.)

1. Joy DA, et al. (2003) Early origin and recent expansion of *Plasmodium falciparum*. *Science* 300:318–321.

Table S1. Fecal samples used in this study

Site	Chimpanzees			Gorillas			Total Nc + Ng
	Subspecies	Nc	N positive PCR	Subspecies	Ng	N positive PCR	
BQ	<i>P.t.t.</i>	10	3 (1)	<i>G.g.g.</i>	18	8 (5)	28
CP	<i>P.t.t.</i>	25	7 (0)	<i>G.g.g.</i>	30	1 (1)	55
DP	<i>P.t.t.</i>	8	3 (0)	<i>G.g.g.</i>	2	0 (0)	10
MB	<i>P.t.t.</i>	24	6 (2)	<i>G.g.g.</i>	22	1 (0)	46
MG	<i>P.t.t.</i>	23	2 (0)	—	—	—	23
MF	<i>P.t.v.</i>	27	0 (0)	—	—	—	27
MP	<i>P.t.v.</i>	8	1 (1)	—	—	—	8
TK	—	—	—	<i>G.g.d.</i>	12	7 (1)	12
Total	—	125	22 (4)	—	84	17 (7)	209

Site, site of feces collection (see Fig. 2); Nc, number of chimpanzee samples; Ng, number of gorilla samples; N positive PCR, number of samples detected positive for a *Plasmodium* species; in parentheses, number of samples for which sequences were obtained and used for the phylogenetic tree analyses in Fig. 1. *P.t.t.*, *Pan troglodytes troglodytes*; *P.t.v.*, *Pan troglodytes vellerosus*; *G.g.g.*, *Gorilla gorilla gorilla*; *G.g.d.*, *Gorilla gorilla diehli*.

Table S2. Sequences used in Fig. 1 with host and GenBank accession numbers

Species	Natural host	GenBank accession nos.
<i>Plasmodium falciparum</i> (3D7)	Human	AY282930
TK060	Gorilla	GU045313
sgGOmoeb	Gorilla	GU045312
BQ654	Gorilla	GU045311
<i>P. reichenowi</i>	Chimpanzee	NC_002235
MP1309	Chimpanzee	GU045314
BQ642	Chimpanzee	GU045315
BQ2341	Gorilla	GU045316
BQ668	Gorilla	GU045317
<i>P. gaboni</i>	Chimpanzee	FJ895307
MB753	Chimpanzee	GU045318
MB783	Chimpanzee	GU045319
BQ2367	Gorilla	GU045320
CP1426	Gorilla	GU045321
BQ638	Gorilla	GU045322
<i>P. vivax</i>	Human	NC_007243
<i>P. ovale</i>	Human	AB354571
<i>P. malariae</i>	Human	AB354570
<i>P. gonderi</i>	African Old World Monkey	AB434918
<i>P. sp. DAJ-2004</i>	African Old World Monkey	AY800112
<i>P. knowlesi</i>	Asian Old World Monkey and	AY722797
<i>P. simium</i>	New World Monkey	NC_007233
<i>P. cynomolgi</i>	Asian Old World Monkey	AY800108
<i>P. simiovale</i>	Asian Old World Monkey	AB434920
<i>P. chabaudi</i>	Rodent	AF014116
<i>P. yoelii</i>	Rodent	M29000
<i>P. berghei</i>	Rodent	AF014115
<i>P. juxtannucleare</i>	Bird	AB250415
<i>P. gallinaceum</i>	Bird	AB250690
<i>Leucocytozoon caulleryi</i>	Bird	AB302215